

## 9° CADENAS Solutions Forum in Bologna

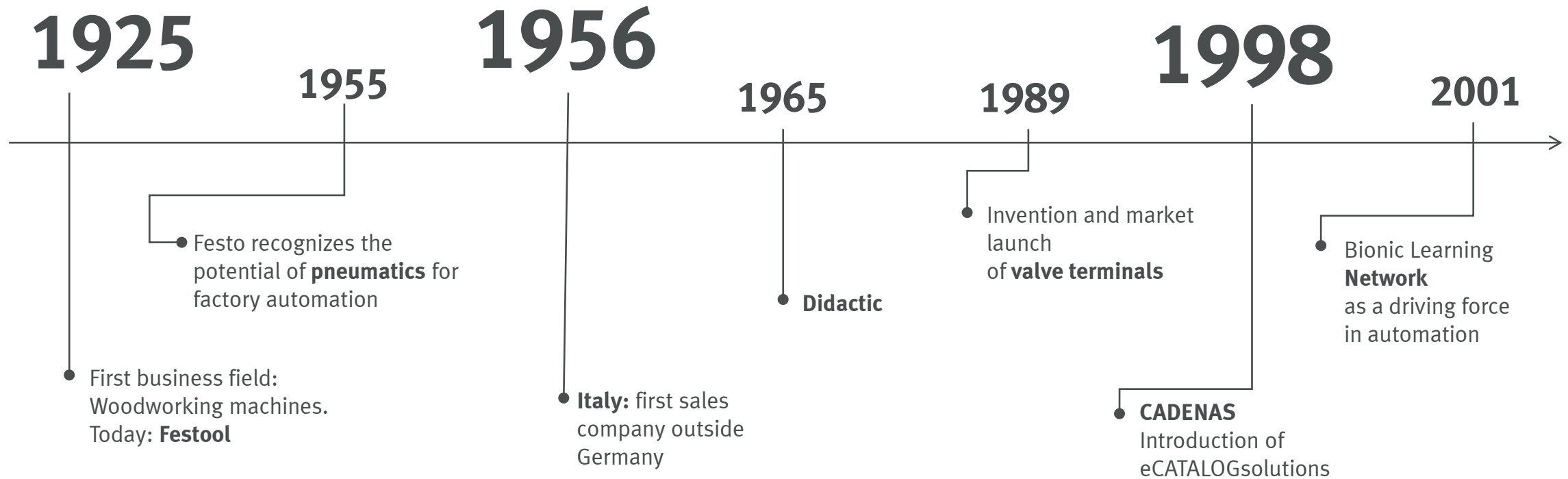


Jürgen Herr  
16. May 2018

# Agenda

- **Overview Festo**
- **eCATALOGsolutions@Festo**
  - **Practical use of eCATALOGsolutions** → data supply
  - **Insights all about our CAD data creation process** → data creation
  - **Festo Design Tool 3D**  
Fast, reliable and efficient when designing in 3D and ordering

## Our history - from woodworking to automation



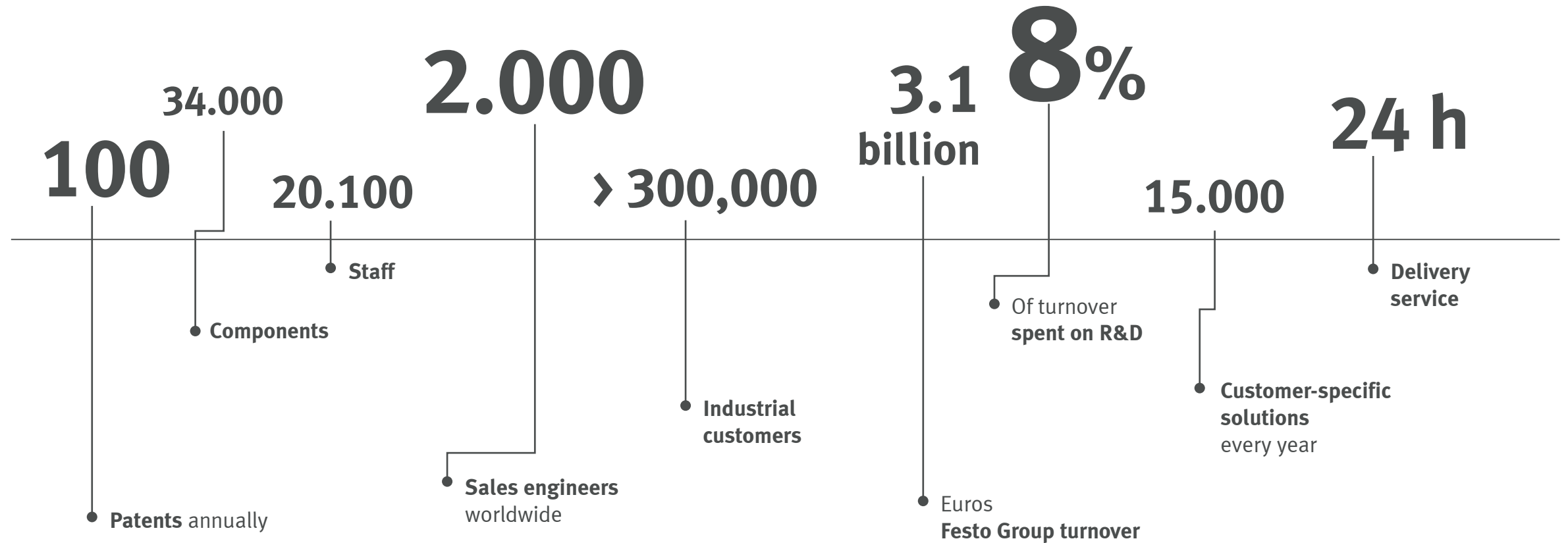
# Festo – your world-wide partner in factory and process automation

## Intelligent automation with pneumatic and electrical drive technology

- Factory automation
- Process automation
- Didactic
- Products
- Services
- Basic and further training



## Festo in Figures



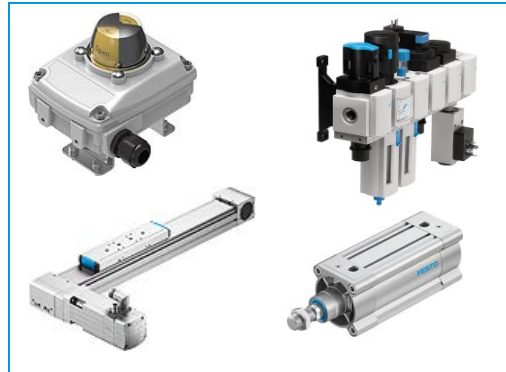


## Festo product range

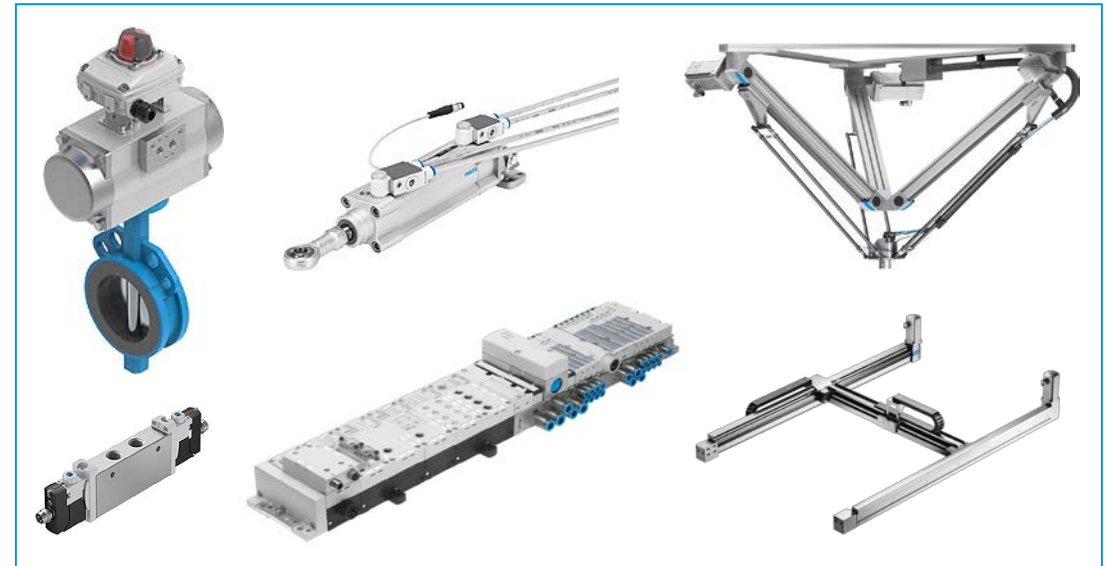
- 34.000 products with millions of variants
- Simple connectors up to complex electrical and pneumatic systems



Electrical and pneumatic connectors, sensors, etc.



Drives and compressed air preparation, etc..



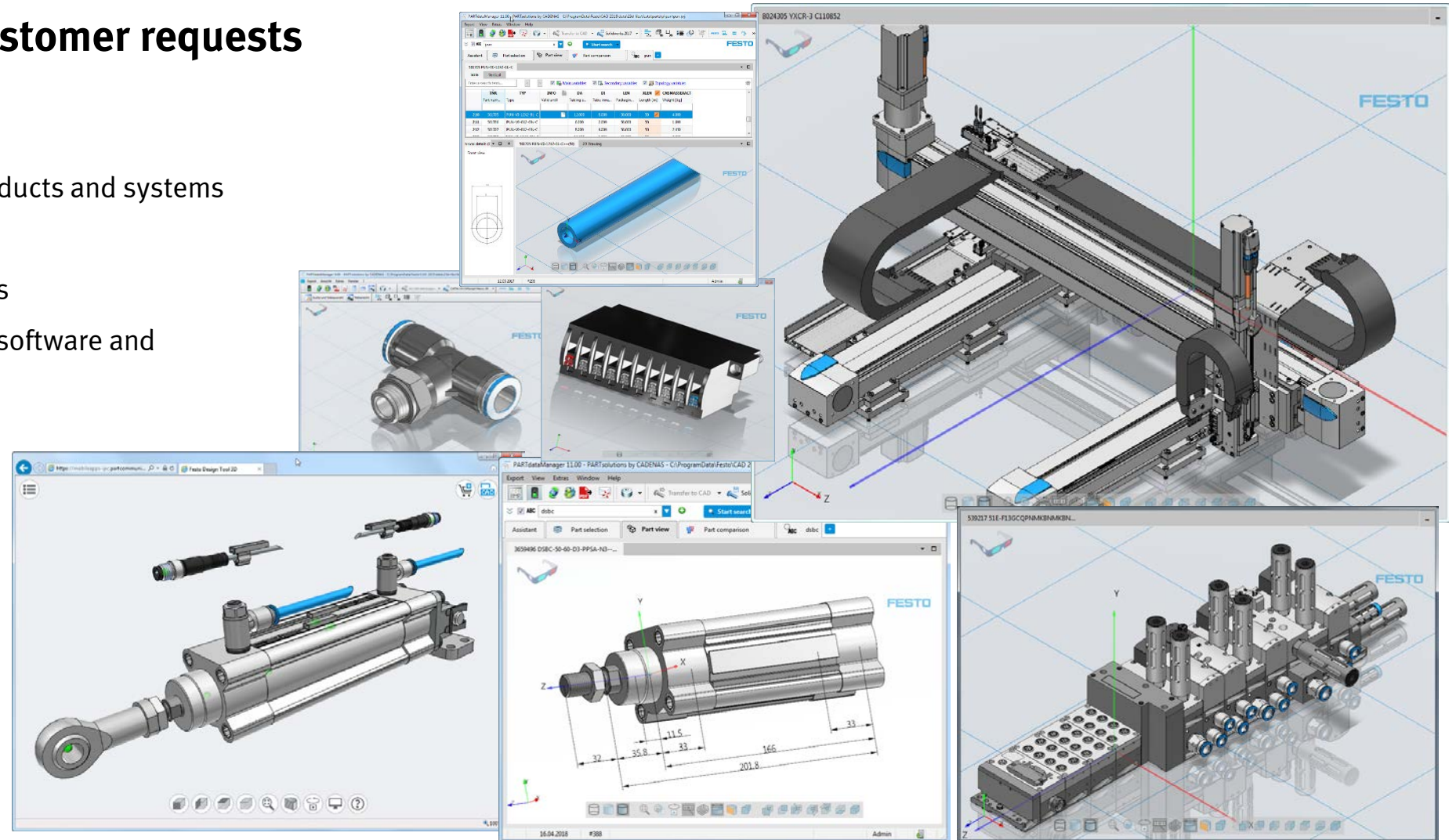
Valves, valve terminals, handling systems, ready-to-install solutions, etc.

# Agenda

- Overview Festo
- eCATALOGsolutions@Festo
  - Practical use of eCATALOGsolutions → data supply
  - Insights all about our CAD data creation process → data creation
  - Festo Design Tool 3D  
Fast, reliable and efficient when designing in 3D and ordering

# Mechanical design - customer requests

- For **all** catalogue products
- Standard and configurable products and systems
- Simplified and function based
- Neutral and native CAD formats
- Accessible with local installed software and
- Via internet

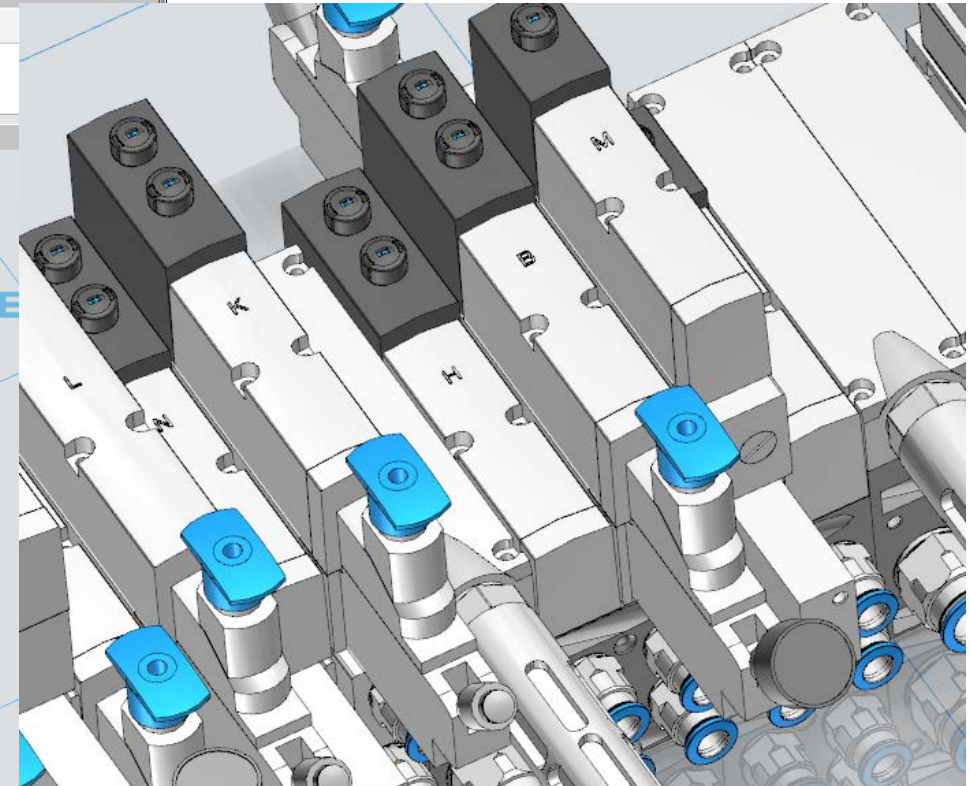
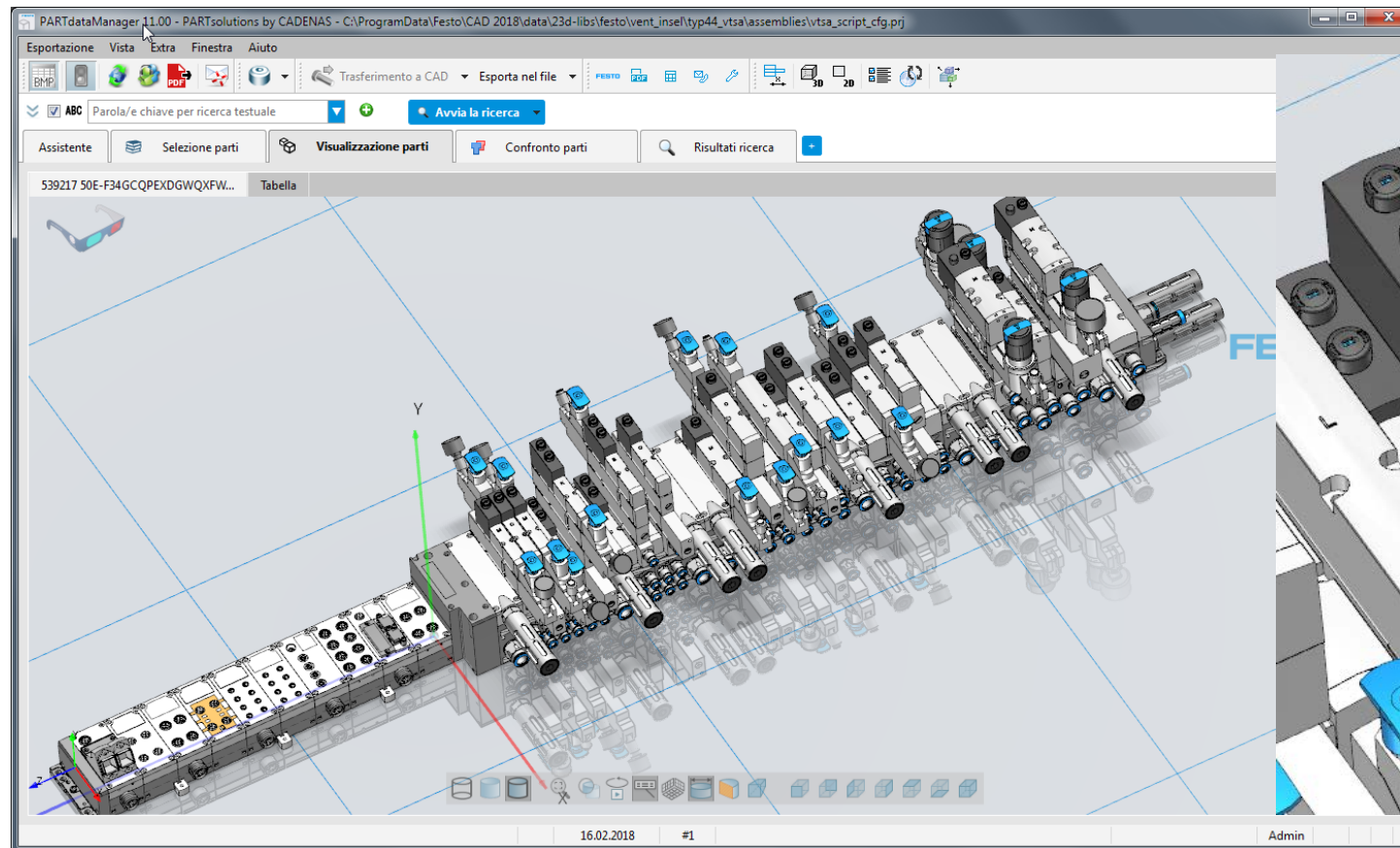




## Example of a valve terminal

Identcode 1: 50E-F34GCQPEXDGWQXFWLRQXAGQT14QXNMKBT03GCQXTKA-S

Identcode 2: 44P-N-V-LSMX-EEAUAEUSUFFBUBFURU3GUGMZATXOZBTZTMZCZULZDTNKZFUXZTHBGXZUMOXZTZUMZAOZBTZTZUMZCTLZDXNZTKZHZUHBZIUMXZTOMZJXZUOZKTMZLTXZTZUL



# Data supply

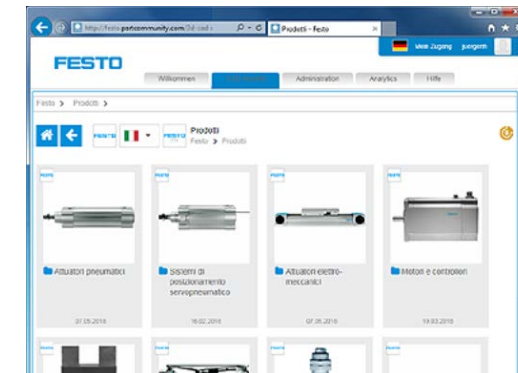
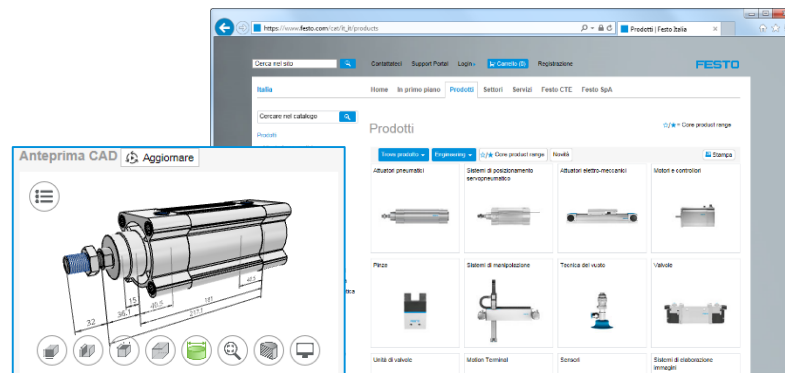
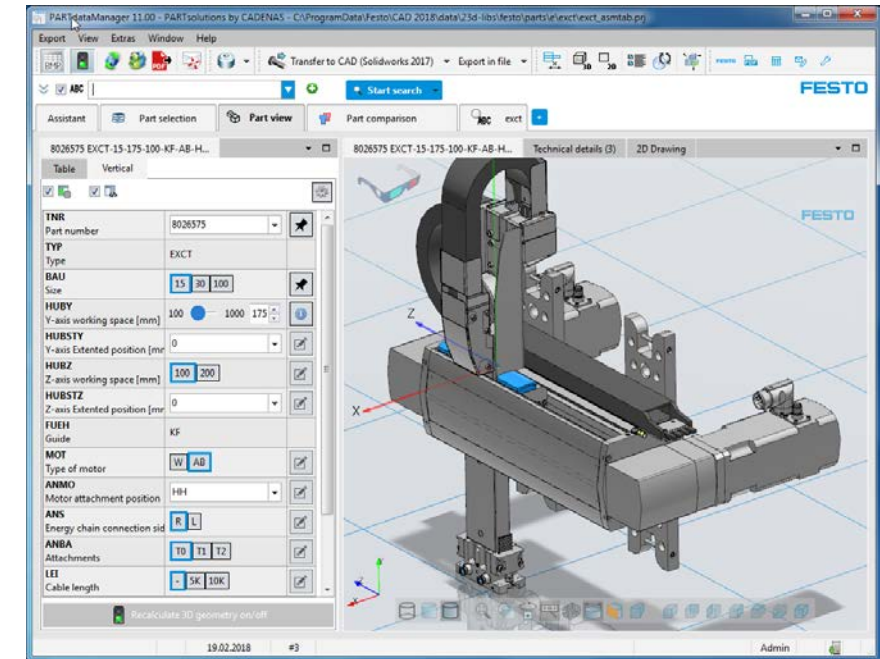
## PARTdataManager (offline)

- Available via Festo product catalogue on DVD and
- Via Download at [Festo Support Portal](http://Festo Support Portal)
- More information [www.Festo.com/PARTdataManager](http://www.Festo.com/PARTdataManager)

## PARTserver / PARTcommunity (online)

- Cadenas CAD portal PARTcommunity
- Festo online product catalogue

[Festo.PARTcommunity.com](http://Festo.PARTcommunity.com)  
[www.Festo.com/catalogue](http://www.Festo.com/catalogue)

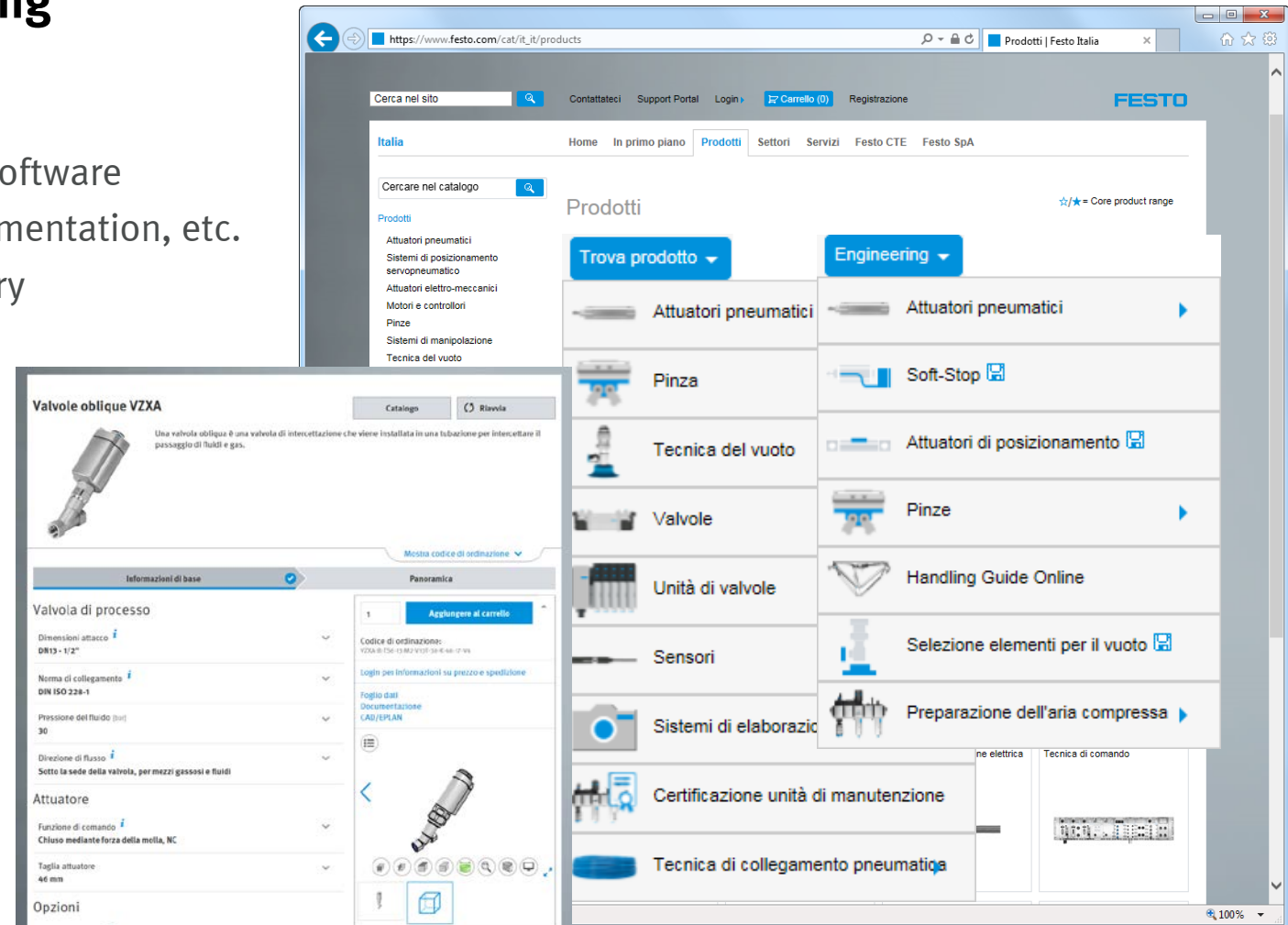


# Product selection, engineering and ordering

## Festo product catalogue – central source

- Product selection, configuration and engineering software
- Engineering data: MCAD, EPLAN, data sheet, documentation, etc.
- Online shop: ordering, price and delivery time query

- ⇒ Find and select the right products
- ⇒ Engineering software to simulate your application
- ⇒ Time saving



# Product selection, engineering and ordering

## Festo product catalogue – central source

- Product selection, configuration and engineering software
- Engineering data: MCAD, EPLAN, data sheet, documentation, etc.
- Online shop: ordering, price and delivery time query

- ⇒ Find and select the right products
- ⇒ Engineering software to simulate your application
- ⇒ Time saving

The collage illustrates the Festo product selection, engineering, and ordering process. It shows the main product selection interface, a dropdown menu for engineering data (CAD/EPLAN, Accessori, Documentazione, Foglio dati, Visualizzare panoramica, Altro), and a detailed product page for 'Valvole oblique VZXA' with technical specifications, a 3D model, and a 2D schematic diagram.



# Product selection, engineering and ordering

## Festo product catalogue – central source

- Product selection, configuration and engineering software
- Engineering data: MCAD, EPLAN, data sheet, documentation, etc.
- Online shop: ordering, price and delivery time query

- ⇒ Find and select the right products
- ⇒ Engineering software to simulate your application
- ⇒ Time saving

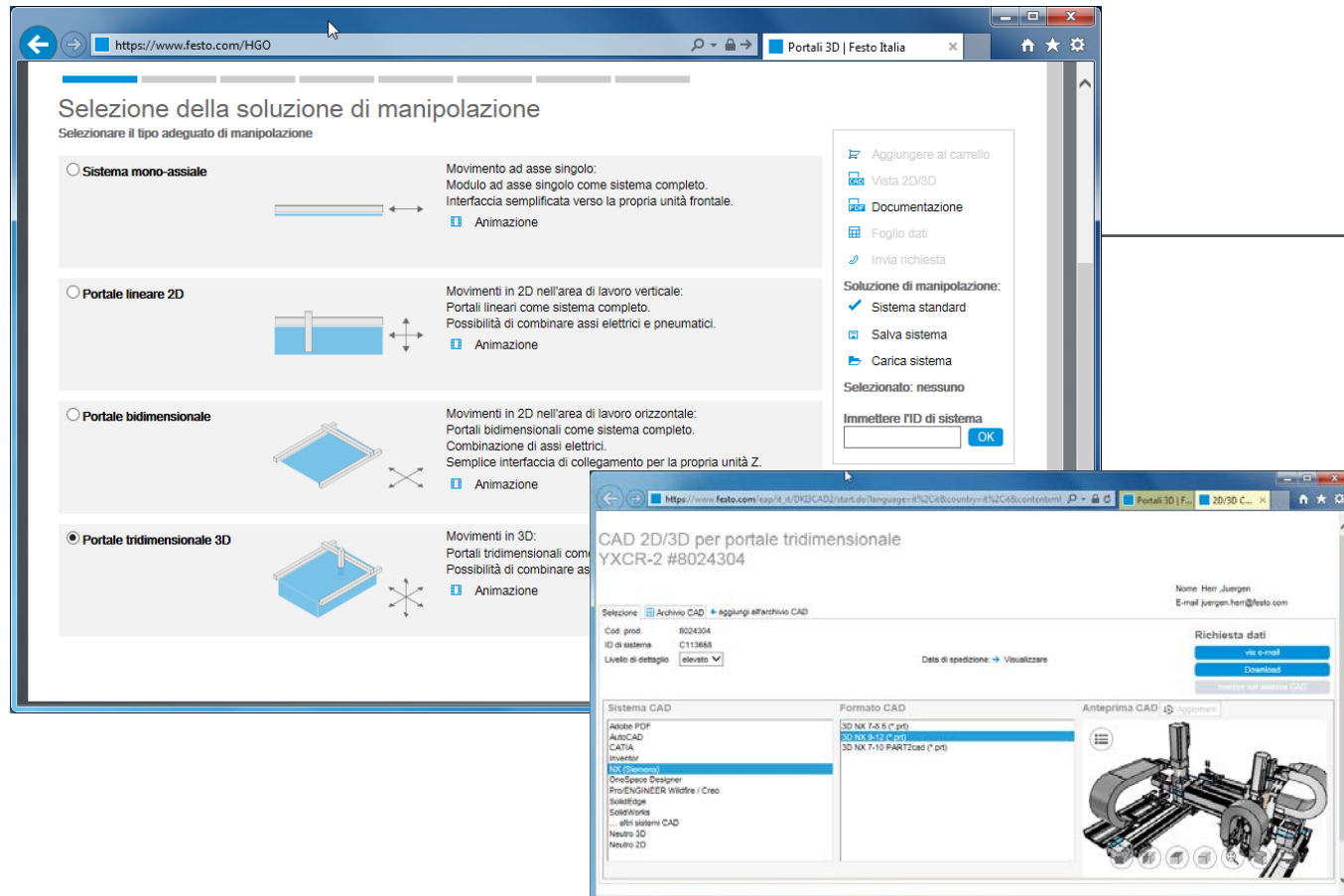
The screenshot displays the Festo website interface for product selection and engineering data. The main navigation menu includes options like 'Aggiungere al carrello', 'CAD/EPLAN', 'Accessori', 'Documentazione', 'Foglio dati', 'Visualizzare panoramica', and 'Altro'. The product selection page for 'CAD 2D/3D per cilindro elettrico ESBF-BS-32-100-10P #8022565' is shown, featuring a search bar, product details, and a table of available CAD formats.

Sistema CAD	Formato CAD
Adobe PDF	3D Pro/E Wildfire 5 (*.asm, *.prt)
AutoCAD	3D Pro/E Wildfire 5 PART2cad (*.asm, *.prt)
CATIA	3D Creo Parametric 1 (*.asm, *.prt)
EPLAN	3D Creo Parametric 2 (*.asm, *.prt)
Inventor	3D Creo Parametric 3 (*.asm, *.prt)
NX (Siemens)	3D Creo Parametric 4 (*.asm, *.prt)
OneSpace Designer	3D Creo Parametric 1-3 PART2cad
SolidEdge	3D Creo Elements/Direct Modeling >=17 (*.isp)
SolidWorks	3D Creo Elements/Direct Modeling >=13 PART2cad (*.pkg)
... altri sistemi CAD	
Neutro 3D	
Neutro 2D	

The right side of the interface shows a 3D model of the cylinder with dimensions (32.5, 45, 32.5) and a 'Richiesta dati' section with buttons for 'via e-mail', 'Download', and 'Inserire nel sistema CAD'.



# Smart Engineering & Simulation - system configurator for handling solutions



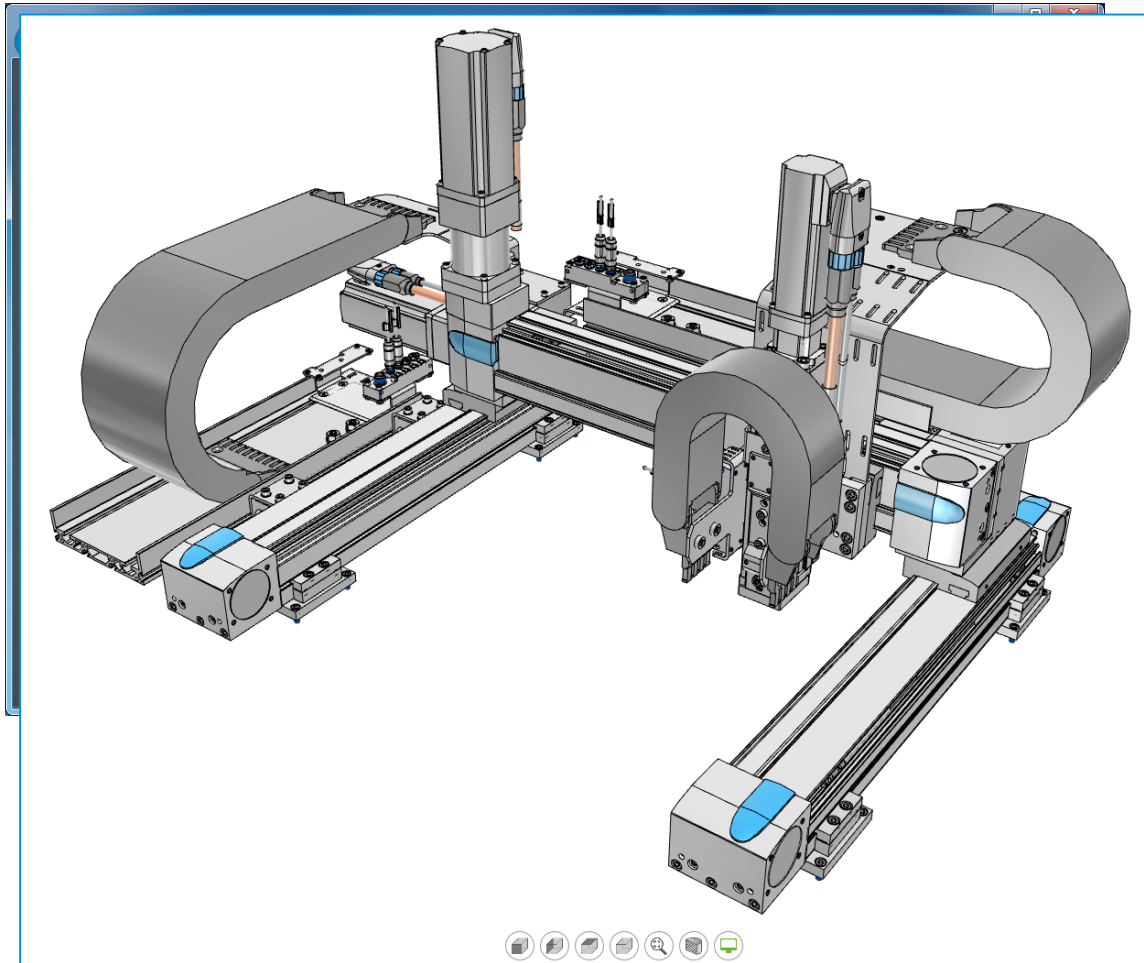
## Selection and simulation

- Choose type of handling system and enter your application data
- Simulation
- Solution proposals

## 2D/3D CAD data

- Selection on Festo page
- Generation and supply via PARTserver

## Smart Engineering & Simulation - system configurator for handling solutions

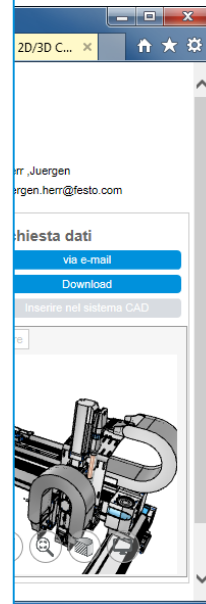


### Selection and simulation

- Choose type of handling system and enter your application data
- Simulation
- Solution proposals

### 2D/3D CAD data

- Selection on Festo page
- Generation and supply via PARTserver



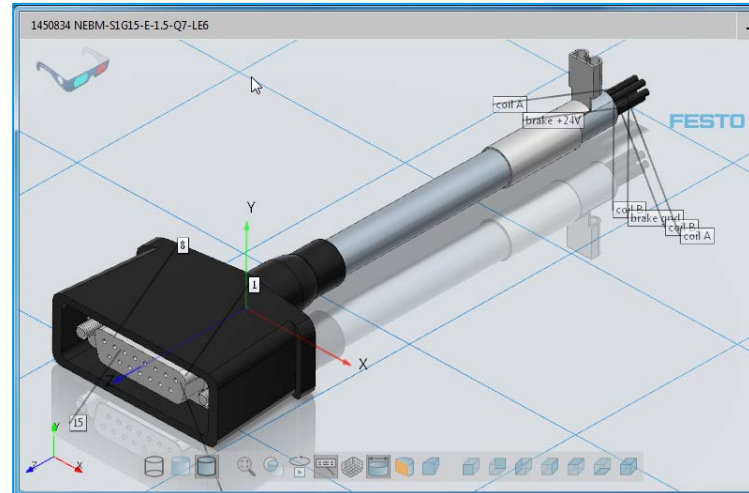
# Data supply



## Festo customization

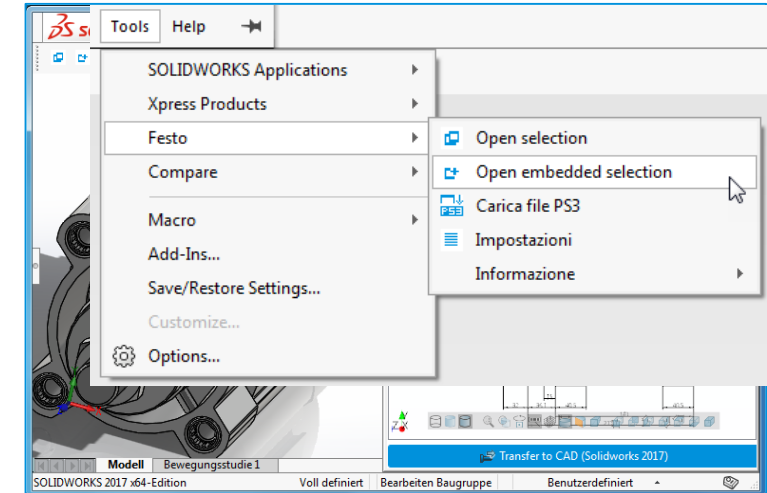


- Festo PARTdataManager
- Colors, logo and splash screen
- Setup by Festo
- Product-related links to Festo online catalogue
- Integration of Festo online configurator for complex products



## CAD data

- ~34.000 catalogue products
- Plus latest and discontinued products
- Kinematic & limited constraints
- Weight, EOL, LOD, eCl@ss, 3D dimensions
- Accessories mapping
- Release notes
- 15 languages
- CAD update reminder



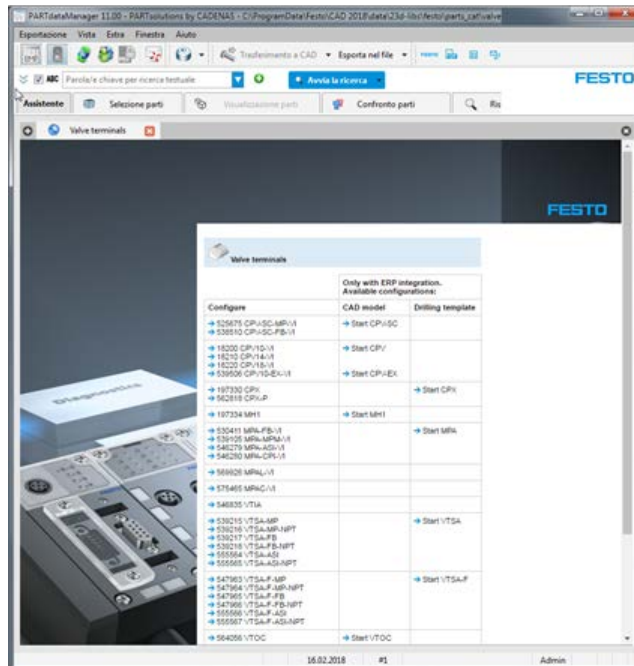
## CAD interfaces & functions

- Neutral CAD formats
- Native CAD interfaces for  
AutoCAD® / Autodesk® / Inventor® / CATIA®V5 /  
Pro/ENGINEER® / NX™ / SOLID EDGE® / SolidWorks®
- Seamless integration  
→ Festo CAD plug-In
- Part comparison and geometric search

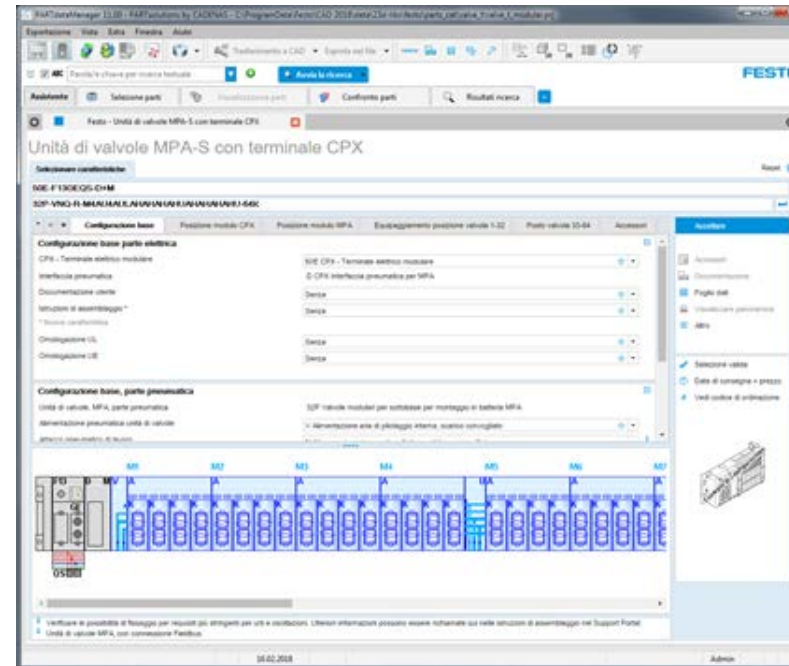
# Integration of Festo online configurator



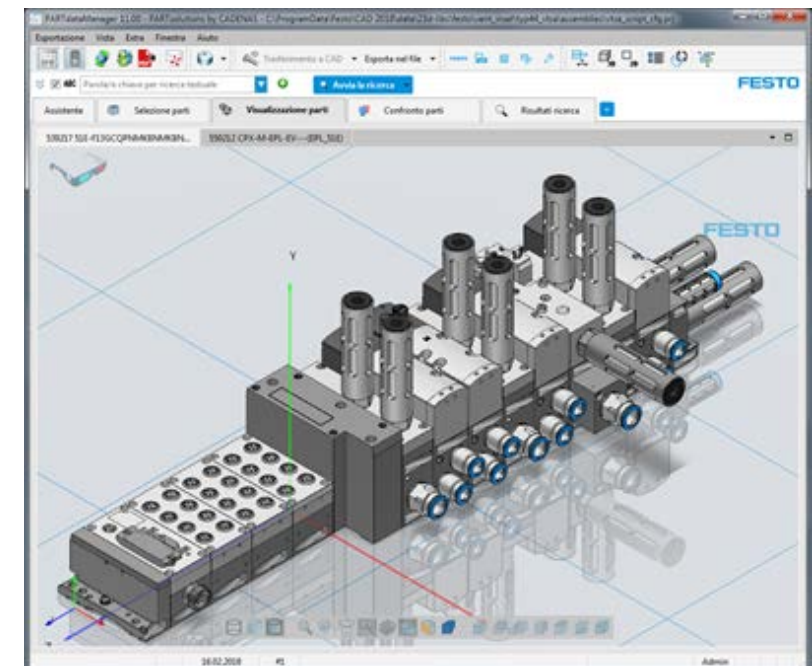
## 1. Selection



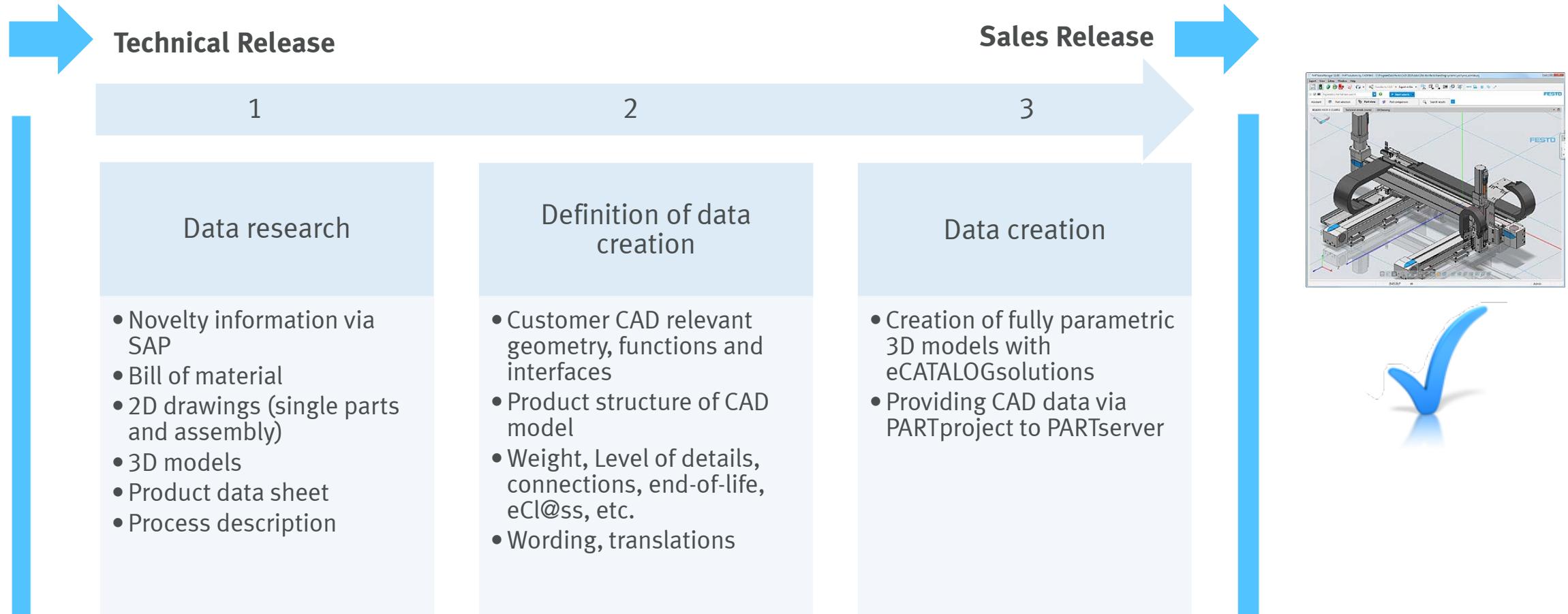
## 2. Configuration



## 3. 2D/3D CAD

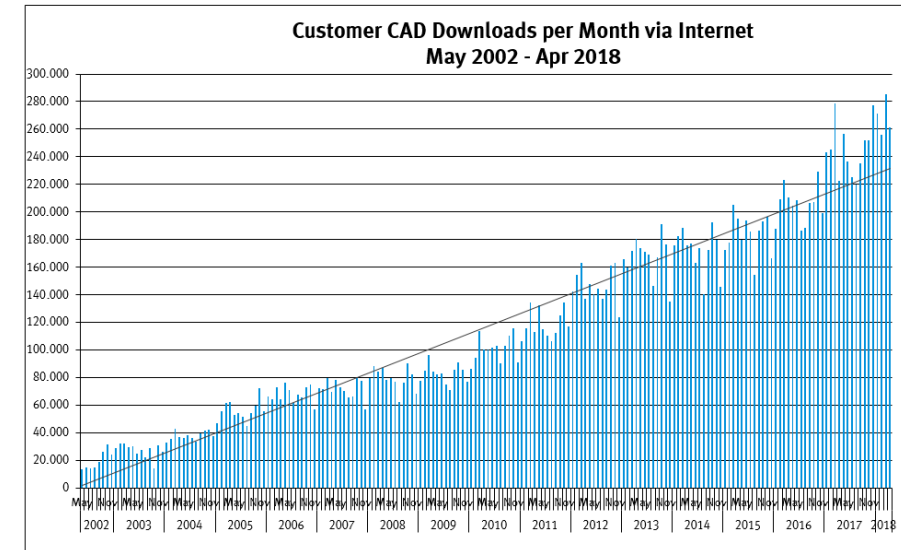
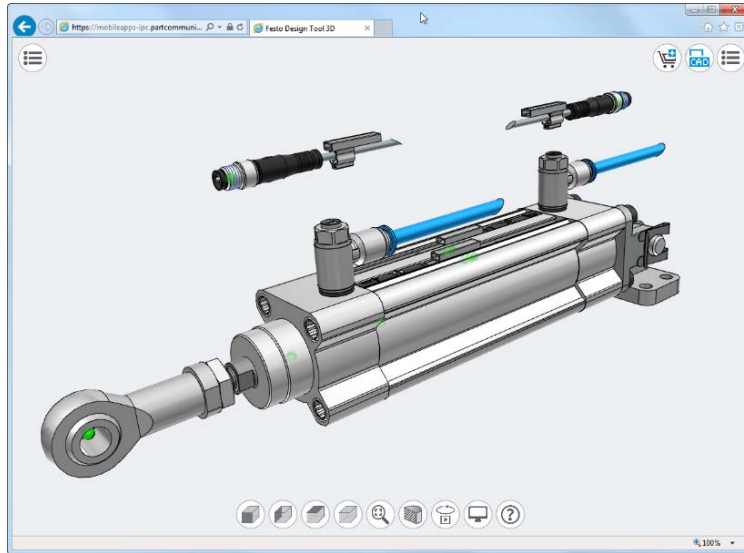


## eCATALOGsolutions – fully integrated in Festo new product engineering and change process





## eCATALOGsolutions@Festo



**Started:**

**1998**

**Product range:**

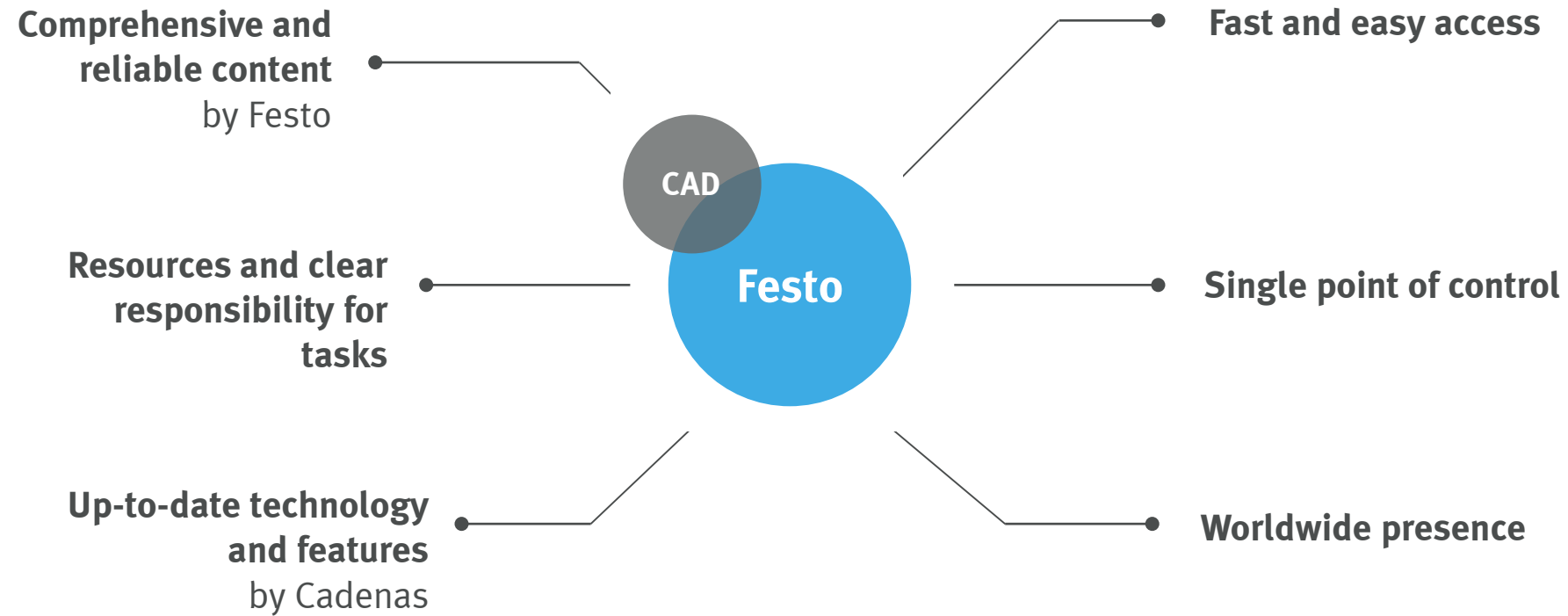
**CAD models for all catalog products**

**Downloads per month:**

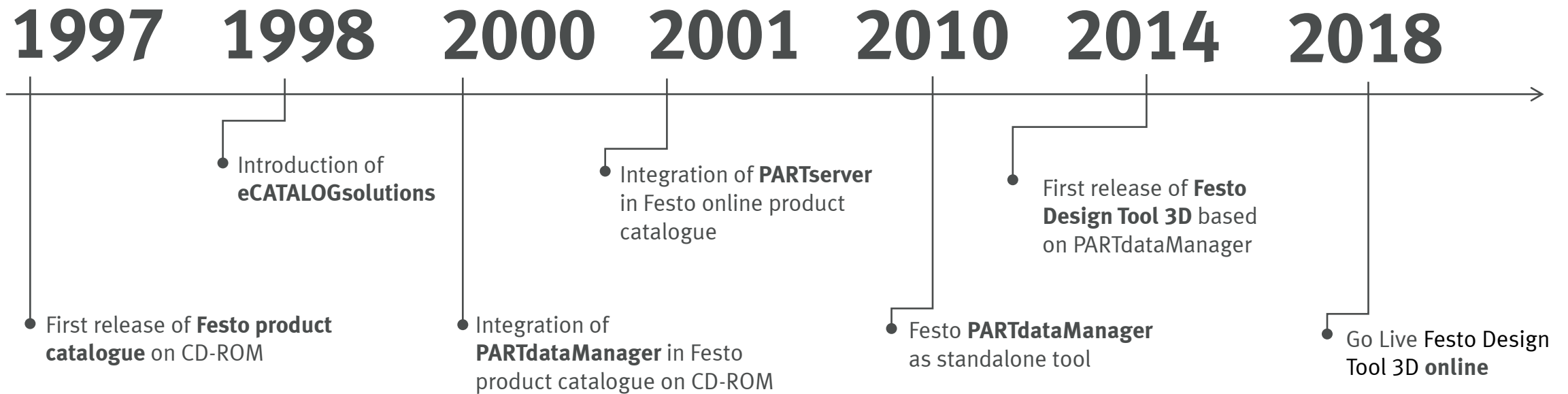
**260.000**

**Has become a success story**

## Factor of success



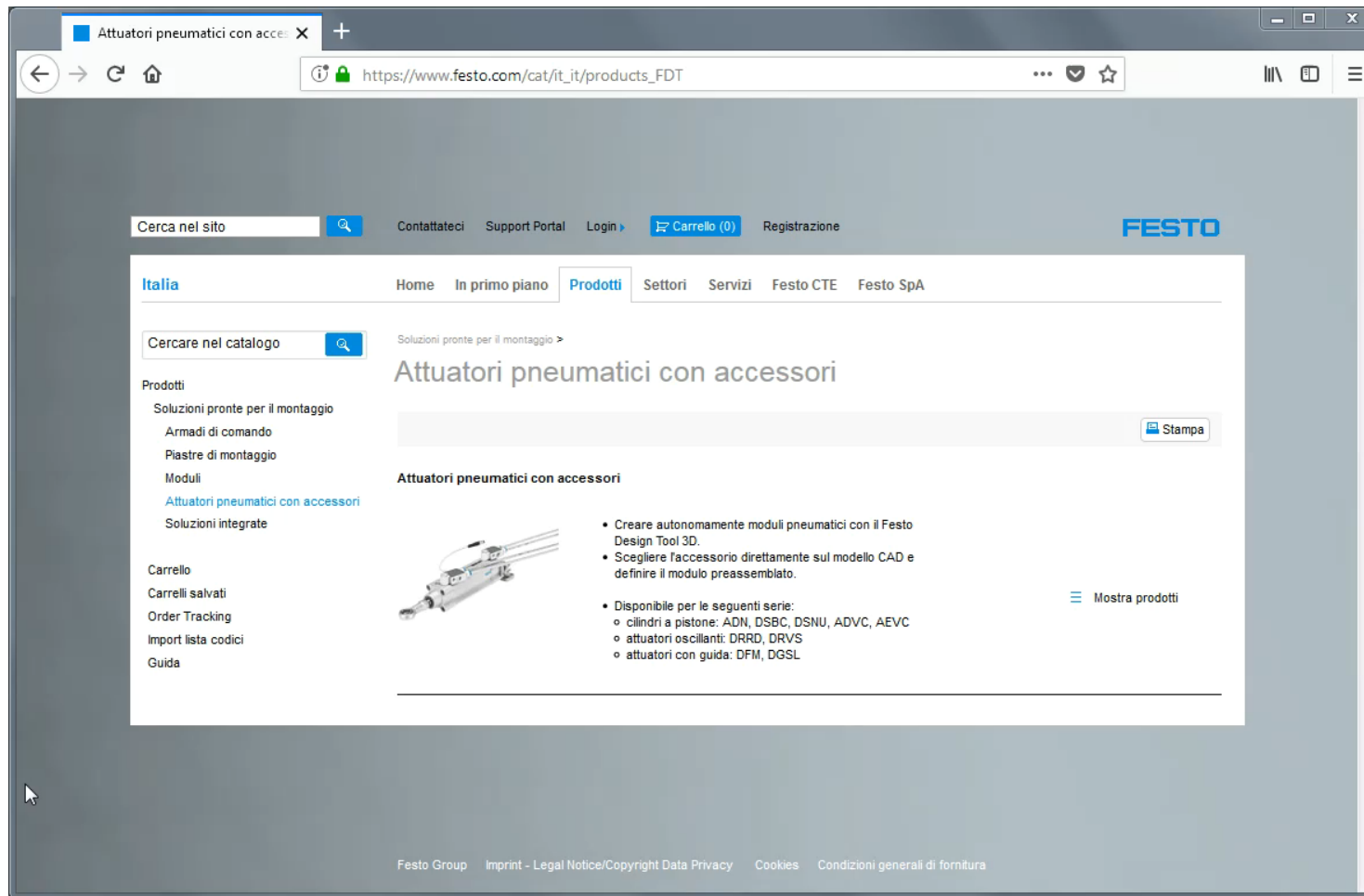
## Cadenas & Festo



# Agenda

- Overview Festo
- eCATALOGsolutions@Festo
  - Practical use of eCATALOGsolutions → data supply
  - Insights all about our CAD data creation process → data creation
  - Festo Design Tool 3D  
Fast, reliable and efficient when designing in 3D and ordering

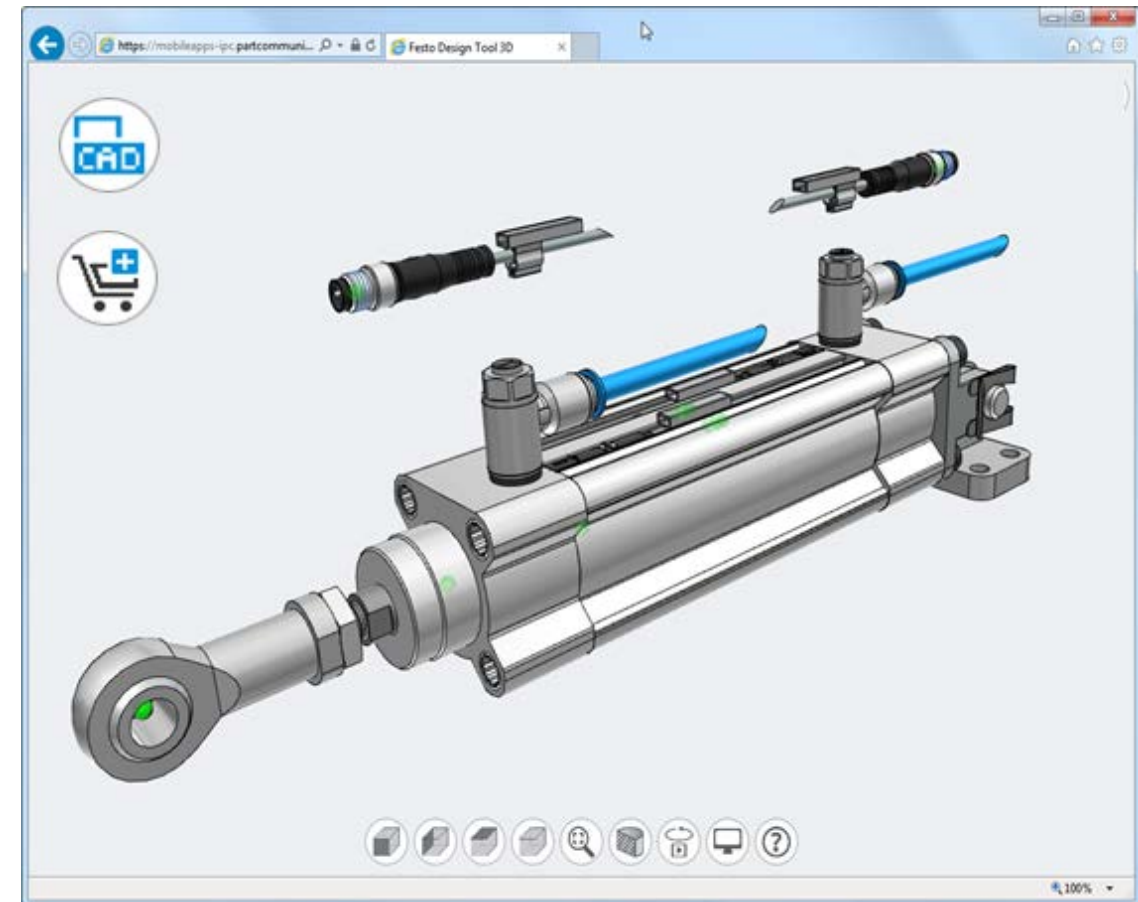
# Festo Design Tool 3D online





## Festo Design Tool 3D online

- 3D CAD-based configurator for pneumatic cylinder modules with accessories
- 80% time saving at the product selection and design process
- No installation needed
- CAD file formats and functions
- Order function: **pre-assembled** and **pre-packed**



## Festo Design Tool 3D online – order options

Add to online Basket

☒ Pre-assembled ☐ Pre-packed



Bitte beachten:

- **Vormontiert** und **Gemeinsam verpackt** nur in folgenden Ländern verfügbar:  
AT, BE, CH, CZ, DE, DK, EE, ES, FI, FR, GB, GR, HU, IE, IT, NL, NO, PL, PT, RU, SE, SI, SK, TR, ZA

Commit

Add to online Basket



☐ Pre-assembled ☒ Pre-packed



Bitte beachten:

- **Vormontiert** und **Gemeinsam verpackt** nur in folgenden Ländern verfügbar:  
AT, BE, CH, CZ, DE, DK, EE, ES, FI, FR, GB, GR, HU, IE, IT, NL, NO, PL, PT, RU, SE, SI, SK, TR, ZA

Commit

## Partnership between CADENAS and Festo



• **Working together**  
Since 1998

• **Software development**  
By Cadenas

• **CAD data creation**  
By Festo

• **eCATALOGsolutions**  
Fully integrated to Festo tools and  
processes from the beginning

# May I answer your questions?

